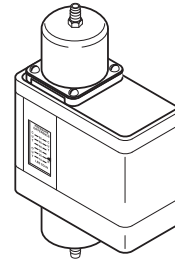


Floating Differential Pressure Switch

For use with reversible electric actuated valves, actuators, or sequence controllers for control of steam, air, gas, or liquid pressure differential.

Features:

- Adjustable setpoint.
- Usable on steam, air, gas, or liquid.
- Floating action for MP-gear train actuators.



Model Chart	
Model No.	Description
PF-126	Refer to Specifications.

Specifications	
Control range	8 to 60 psi (57 to 414 kPa). Graduated scale and external adjustment screw.
Sensing elements	High and low pressure bellows with opposing spring mechanism.
Differential	2 psi (14 kPa) fixed.
Maximum static pressure	180 psi (1241 kPa).
Environment	
Ambient temperature limits	Shipping and storage: -40 to 140°F (-40 to 60°C). Operating: 35 to 140°F (0 to 60°C).
Humidity	5 to 95% RH, non-condensing.
Locations	NEMA Type 1.
Electrical switch	Floating SPDT. Arc suppressor included with unit.
Ratings	1.0 amps at 24 Vac, 60 Hz.
Connections	
Electrical	Coded screw terminals.
Pressure connectors	Two 1/4 in. male flare.
Case	All metal with 1/2 in. conduit opening.
Mounting	In any position.
Dimensions	7-7/8 H x 4 W x 2 D in. (200 x 102 x 51 mm).

Typical Applications

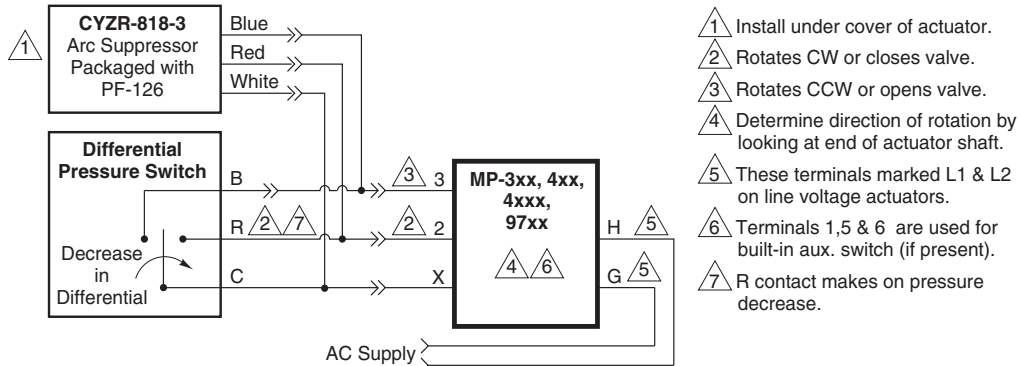


Figure 1 Switch Action and Typical Wiring.